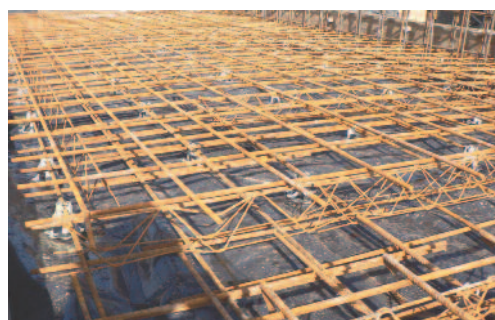


## REINFORCEMENTS

### Fabric

Used for the reinforcement of concrete structures and floor slabs. Supplied in standard sheet sizes of 2.4m x 4.8m. Flying ends are available for 'A' type meshes, reducing the build up of lap depth. Can also be pre bent to your requirements. Stainless steel meshes also available.



		Wire Centres		Wire Diameter		Sheet Weight (Kg)	Approximate Sheets Per Tonne	Square Metres Per Tonne
		Main (mm)	Cross (mm)	Main (mm)	Cross (mm)			
Square	A393	200	200	10	10	70.96	15	162.34
Mesh	A252	200	200	8	8	45.50	22	253.16
Fabric	A193	200	200	7	7	34.79	29	331.13
	A142	200	200	6	6	25.57	40	450.45
	A98	200	200	5	5	17.74	57	649.35
	B1131	100	200	12	8	125.57	8	91.74
Structural	B785	100	200	10	8	93.57	11	122.85
Mesh	B503	100	200	8	8	68.31	15	168.63
Fabric	B385	100	200	7	7	52.19	20	220.75
	B283	100	200	6	7	42.97	24	268.10
	B196	100	200	5	7	35.14	29	327.87
	C785	100	400	10	6	77.41	13	148.81
	Long	C503	100	400	8	5	50.00	20
Mesh	C385	100	400	7	5	39.28	26	293.26
Fabric	C283	100	400	6	5	30.07	34	383.14
	C636	100	400	9	6	63.94	16	180.18
Wrapping	D98	200	200m	5	5	17.74	57	649.35
Fabric	D49	100	100m	2.5	2.5	8.87	113	1298.70

### Bars – Cut & Bent

Reinforcement bars cut and bent to requirements from bending schedules from a few bars to large tonnage contracts. EXPRESS in house service available. PREFABRICATION of rebar is also available. Please contact our sales office for full details.

Full shape code chart at rear of brochure.

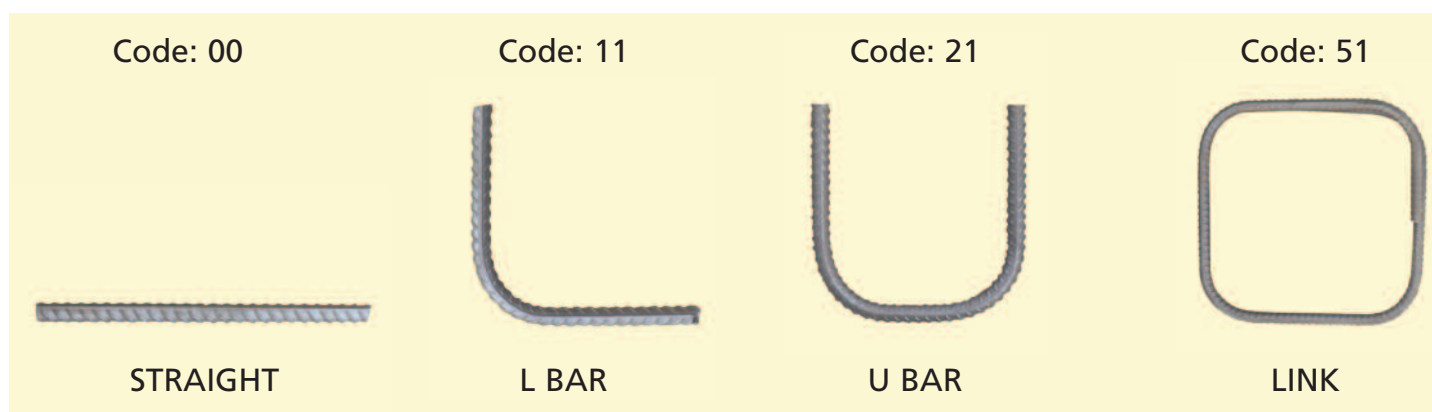


#### Bar Unit Weights/Area

Nominal Diameter	Weight Kg Per Metre	c-Secn = Area
6	0.222	28.3mm
8	0.395	50.3mm
10	0.616	78.5mm
12	0.888	113.1mm
16	1.579	201.1mm

Nominal Diameter	Weight Kg Per Metre	c-Secn = Area
20	2.466	314.2mm
25	3.854	490.0mm
32	6.313	804.2mm
40	9.864	1256.6mm
50	15.413	1963.5mm

### Common Shapes



For prices please contact our sales office

Tel: 01223 862230 Fax: 01223 440246 Web: [www.informuk.co.uk](http://www.informuk.co.uk) Email: [general@informuk.co.uk](mailto:general@informuk.co.uk)