

## FORMWORK ACCESSORIES – 15/20/26 MM

### Dywidag Tie Rod

A standard tie rod specifically designed for use with formwork. For all types of concrete structures. Cutting service available.



Code	Item	Failing Load	Weight Kg	Stock Lengths (m)
DY15	Dywidag 15	195 kn	1.55	6.0
DY20	Dywidag 20	345 kn	2.50	12.0
DY26	Dywidag 26.5	568 kn	4.50	12.0

### Inform Weldable Tie Rod

A continuous all round threaded tie rod, which is weldable and can also be used to form pigtails, hooks, loops etc. Cutting service available.



Code	Item	Failing Load	Weight Kg	Stock Lengths (m)
B15	Inform 15	165 kn	1.55	6.10
B20	Inform 20	300 kn	2.60	6.35
B26	Inform 26	510 kn	4.60	6.30

### Wing Nut

A 'knock on' wing nut used in conjunction with waler plates for securing tie rods in formwork applications.



Code	Item	Weight Kg
WN15B	Wing Nut 15mm	0.36
WN20B	Wing Nut 20mm	0.40
WN26B	Wing Nut 26mm	0.90

### Waler Wing Nut

A combined waler plate and wing nut for 15mm tie rod. Ideal for use with steel soldiers. Finish: anti-rust.



Code	Item	Ø mm	Weight Kg
WWN70	Waler Wing Nut 70	70	0.58
WWN100	Waler Wing Nut 100	100	0.70

### Waler Plate Pressed

Used with the knock on wing nut. Ideal with timber and steel soldiers.



Code	Item	Weight Kg
WPB	Pressed Waler Plate 120 x 120 x 10	1.30

### Waler Plate – Plain

A plain flat mild steel plate washer. For use on Formwork applications



Code	Item	Weight Kg
WP12B	Plain Waler Plate 120 x 120 x 12	1.30
WP20B	Waler Plate 120 x 120 x 20	2.30
WP26B	Waler Plate 150 x 150 x 30	5.38

### Hexagon Nut

Suitable for all 15mm tie bars and for use in situations where access is restricted. Ideal for use by pre-casters and mould makers.



Code	Item	Weight Kg
HN25	Hexagon Nut, 15 x 25mm	0.10
HN50	Hexagon Nut, 15 x 50mm	0.21
HN206	Hexagon Nut, 20 x 60mm	5.00
HN26	Hexagon Nut, 26 x 85mm	8.00

## Connection Nut

Used for joining tie rods. Complete with centre stop to ensure equal spacing of tie bar inside the connector.



Code	Item	Weight Kg
CS	Connection Nut 15	0.46
CS20	Connection Nut 20	0.65
CS26	Connection Nut 26.5	1.40

## Ribbed Connector – Water Barrier

An economical cast dual purpose water barrier/connection nut.



Code	Item	Weight Kg
CSR	Ribbed Water Barrier/Connection Nut	0.5

## Water Barrier – Flanged

Used in water retaining structures. Cast into the concrete wall between two separate tie bars. After pouring, tie rods are removed, the water barrier remains in situ. Allow two reducers per water barrier.



Code	Item	Weight Kg
WBK	Water Barrier	0.55

Code	Item	Pack Size
BWC	Reducer	250

## Water Barrier – Plated

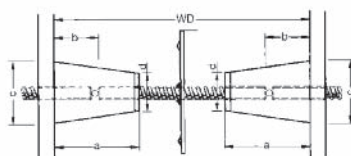
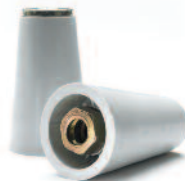
Cast into the concrete wall between two tie bars, they allow 'thru tie systems' to be used in water retaining structures. Available with a 120mm x 120mm indented plate for maximum efficiency or as a plain metal sleeve, where access between reinforcement bars may be difficult.



Code	Item	Size mm	Weight Kg
WB15	Water Barrier 15	120 x 120	0.60
WB20	Water Barrier 20	Plate 120 x 120	1.15

## MKK Cone

Used when heavy duty tie rods or anchors have to be left in the concrete and for climbing applications. Cones are removed with a special spanner.



Code	Item	Dim a mm	Dim b mm	Ø d mm	Ø c mm	A/F mm	Wt Kg
MKK15	MKK Cone 15	95	50	61	40	27	0.50
MKK20	MKK15 Cone 20	126	65	42	70	32	0.77
MKK26	MKK Cone 26.5	135	70	57	103	46	1.70

## SKK Cone

The SKK steel climbing cone can be used in conjunction with 15mm tie bar and a M 24 bolt. It can be used wherever the MKK 15 was used as the leading cone. The SKK 15 is tightened and released with the special SKK spanner. (Details on application).



Code	Item	Weight Kg
SKK15	SKK Cone	1.27
SKKS	Spanner	2.50

## Steel Cone

Re-usable steel cone for use when the tie rod or anchors are to be left embedded in the concrete.



Code	Item	Weight Kg
TL15	Re-usable Steel Cone 15	0.65
TL20	Re-usable Steel Cone 20	0.95

## Spring Clamp

A fast and effective method for securing wire tie rods in light formwork applications. The tension tool is used to pull the wire tie bar through the clamp.



Code	Item	Weight Kg
SC	Spring Clamp	0.47
TT	Tension Tool	3.43