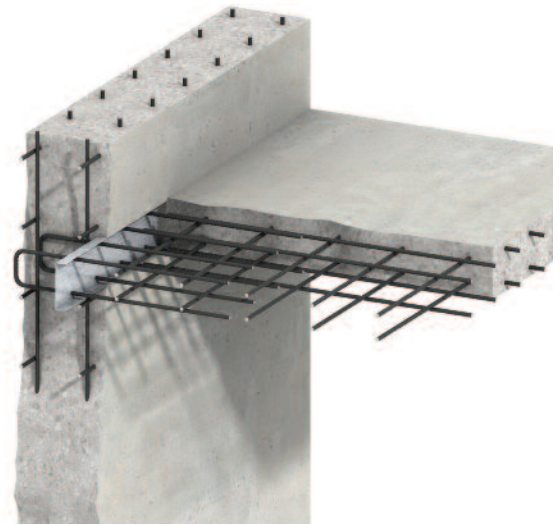
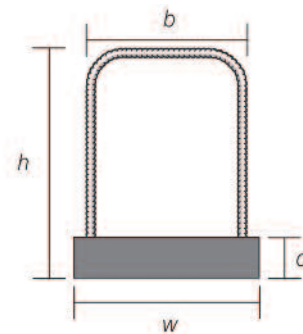
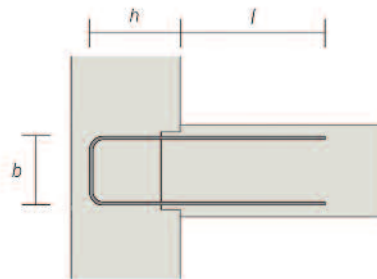


# ANCON EAZISTRIP - REINFORCEMENT CONTINUITY SYSTEM

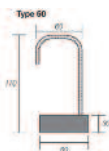
The Ancon Eazistrip Reinforcement Continuity System is a quick and easy to install method of maintaining continuity of reinforcement at the construction joints in concrete. It consists of a galvanised steel casing with a dimpled surface to provide an effective concrete bond. Pre-bent bars are housed within the casing and are enclosed by a protective cover. Each end of the unit is sealed by a polystyrene block in order to prevent the ingress of concrete. The complete unit is nailed to the formwork. Alternatively it can be wired back to the main reinforcement cage. The concrete is then cast. After striking the formwork, the cover is removed and the bars are straightened. The steel case remains embedded in the wall and is filled with concrete when the next section is poured, the dimpled surface providing an effective key.



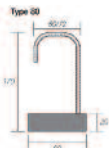
FULL DETAILS AVAILABLE FROM OUR SALES OFFICE.



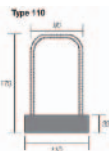
EZ60H



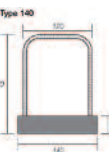
EZ80H



EZ110U



EZ140U



EZ160U



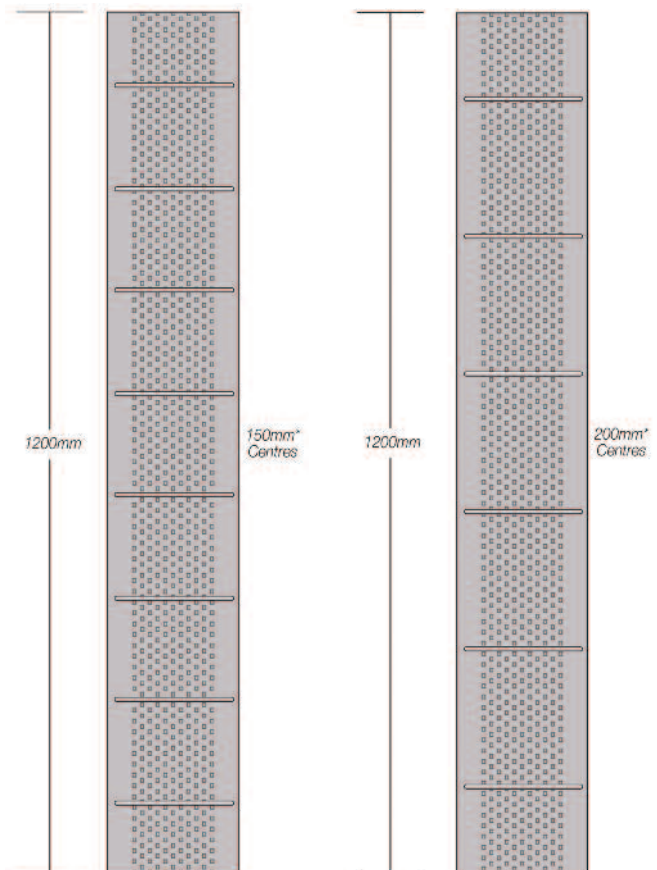
EZ190U



EZ240U



T10	C150/C200	410
T10	C150/200	410
T12	C150/200	500
T10	C150/200	410
T12	C200	500
T10	C150/200	410
T12	C150/200	500
T10	C150/200	410
T12	C150/200	500
T16	C150/200	650
T10	C150/200	410
T12	C150/200	500
T16	C150/C200	650



\*Other centres are available

For prices please contact our sales office

Tel: 01223 862230 Fax: 01223 440246 Web: [www.informuk.co.uk](http://www.informuk.co.uk) Email: [general@informuk.co.uk](mailto:general@informuk.co.uk)